



INNOVATIVE PLASTICS

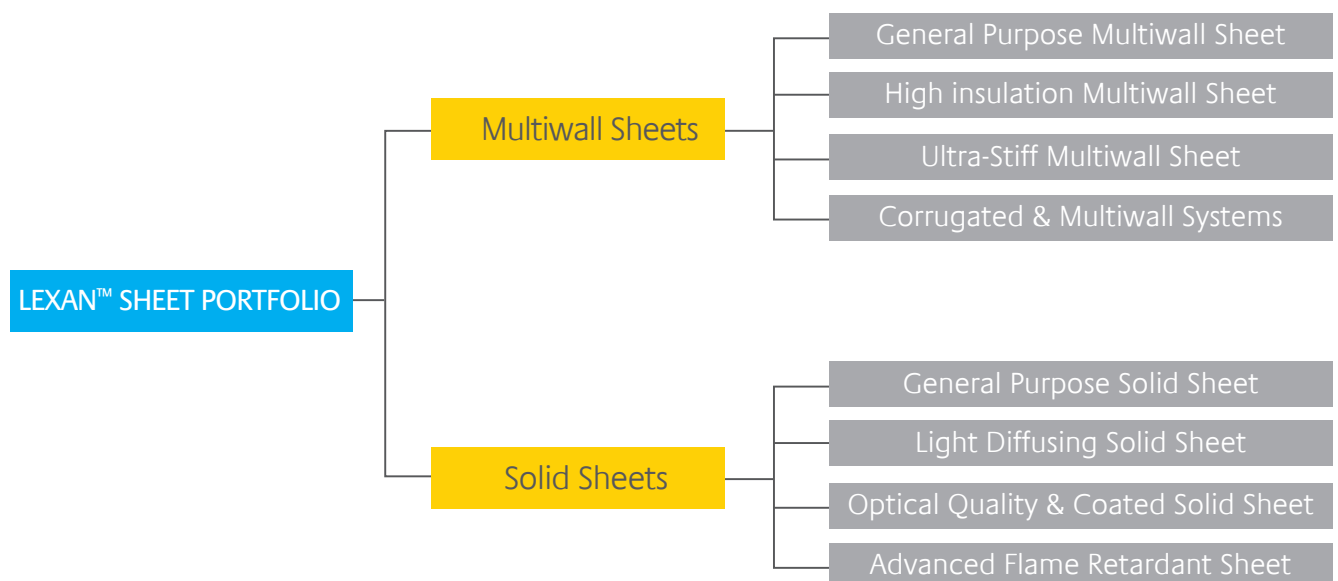
# LEXAN™ SHEET PORTFOLIO

SPECIALTY FILM & SHEET, PACIFIC



CHEMISTRY THAT MATTERS™

SABIC'S SPECIALTY FILM & SHEET BUSINESS OFFERS HIGH QUALITY, ENGINEERED THERMOPLASTIC SOLID AND MULTIWALL SHEET PRODUCTS ACROSS A WIDE VARIETY OF INDUSTRIES, RANGING FROM BUILDING AND CONSTRUCTION, LAMINATION, SIGN TO TRANSPORTATION. OUR LEXAN™ POLYCARBONATE SHEET PORTFOLIO IS BACKED BY ADVANCED TECHNICAL SUPPORT AND APPLICATION DEVELOPMENT SERVICES AROUND THE WORLD TO MEET OUR CUSTOMERS' GLOBAL SPECIFICATION NEEDS WITH LOCAL SUPPLY.



# CONSTANTLY ADDING VALUE: PROVIDING MORE THAN JUST HIGH QUALITY PRODUCTS



---

SABIC Innovative Plastics' Specialty Film and Sheet business is a leading supplier of high performance engineering sheet products, serving customers around the world in a broad spectrum of applications. Our virtually unbreakable, lightweight, fire resistant sheet product portfolio includes a wide variety of structures, ranging from solid, multiwall and corrugated sheet. The company has integrated extrusion processes, surface texturing and coating technologies to provide value added solutions across a wide variety of industries.

---

SABIC offers mono- and multi-layer extrusion capabilities and in-line master sheeting both in-house and through its distribution and converter partners. The company also offers cut-to-size and 3D forming services. SABIC's application development facilities provide lamination, cold- and hot line-bending, screen printing and architectural design services to customers.

---

At SABIC, we are dedicated to meeting our customers' ever changing needs with our high performance LEXAN™ sheet portfolio. Our material solutions and services help our customers to reduce their system costs, create innovative designs and environmentally responsible materials.

SABIC's ongoing investment in world-class technologies demonstrates our commitment to helping our customer's technical requirements, application development needs and business goals.

# MULTIWALL SHEET

Our LEXAN™ THERMOCLEAR™ polycarbonate multiwall sheet portfolio consists of different structures. The products can provide an outstanding balance of light weight, high impact strength and stiffness. Its light weight can make this product less expensive to transport and facilitates easy and fast installation. In addition, it provides excellent thermal insulation, UV- and flame resistance and long-term light transmission. LEXAN THERMOCLEAR sheet is available in clear, opal white, solar control and other custom colors. LEXAN THERMOCLEAR also comes in a variety of specialty finishes, such as the Easy Clean or Drippard coatings, to allow sheets to be easily cleaned or prevent the formation of condensation.





## GENERAL PURPOSE GRADES

SABIC has one of the broadest portfolios of general purpose multiwall sheets available in two and three wall structures. These products are available in various gauges, weights and in a wide color range.

### POTENTIAL APPLICATIONS:

- Commercial-, residential- and stadium roof glazing
- Carports
- Greenhouses
- Swimming pool covers
- Industrial roofing, roof-lights
- Signage

### KEY BENEFITS:

- Light weight and high stiffness
- High impact strength
- Long-term light transmission
- Ease of installation
- Excellent thermal insulation and flame resistance
- Two side UV resistance, avoiding installation errors and improving cutting yields
- Broad portfolio of structures, coatings and colors
- Custom widths with closed edges



## HIGH STIFFNESS GRADES

LEXAN™ Ultra-Stiff THERMOCLEAR™ sheet offers exceptional performance with capability to withstand wind and snow loading pressures of up to 7000 N/m<sup>2</sup>. This exceptionally stiff sheet resists high wind and snow loads without the risk of cracking or breakage.

### POTENTIAL APPLICATIONS:

- Stadium roofing
- Railway station roofing
- Shopping centers
- Other large architectural projects

### KEY BENEFITS:

- High stiffness allowing for high wind and snow loads
- Light weight
- Available in solar control versions
- Excellent resistance against UV weathering
- High resistance against hail damage





## HIGH INSULATION GRADES

The drive to reduce energy consumption to cut costs is one of the highest priorities in building and construction today. SABIC's high insulation LEXAN™ polycarbonate (PC) sheet products offer many ways to increase energy efficiency. The multi-wall structure of LEXAN THERMOCLEAR™ sheet offers significant advantages when thermal insulation is a major consideration. The hollow form provides excellent insulation to avoid heat escape during wintertime and by using solar control version to restrict heat buildup during summertime.

### POTENTIAL APPLICATIONS:

- Verandas
- Office buildings
- Shopping centers
- Architectural projects

### KEY BENEFITS:

- High thermal insulation
- Solar control version available
- Despite high thickness, low weight per m<sup>2</sup>
- 2 sides UV protection



## PRODUCT OVERVIEW (SELECTED GRADES)

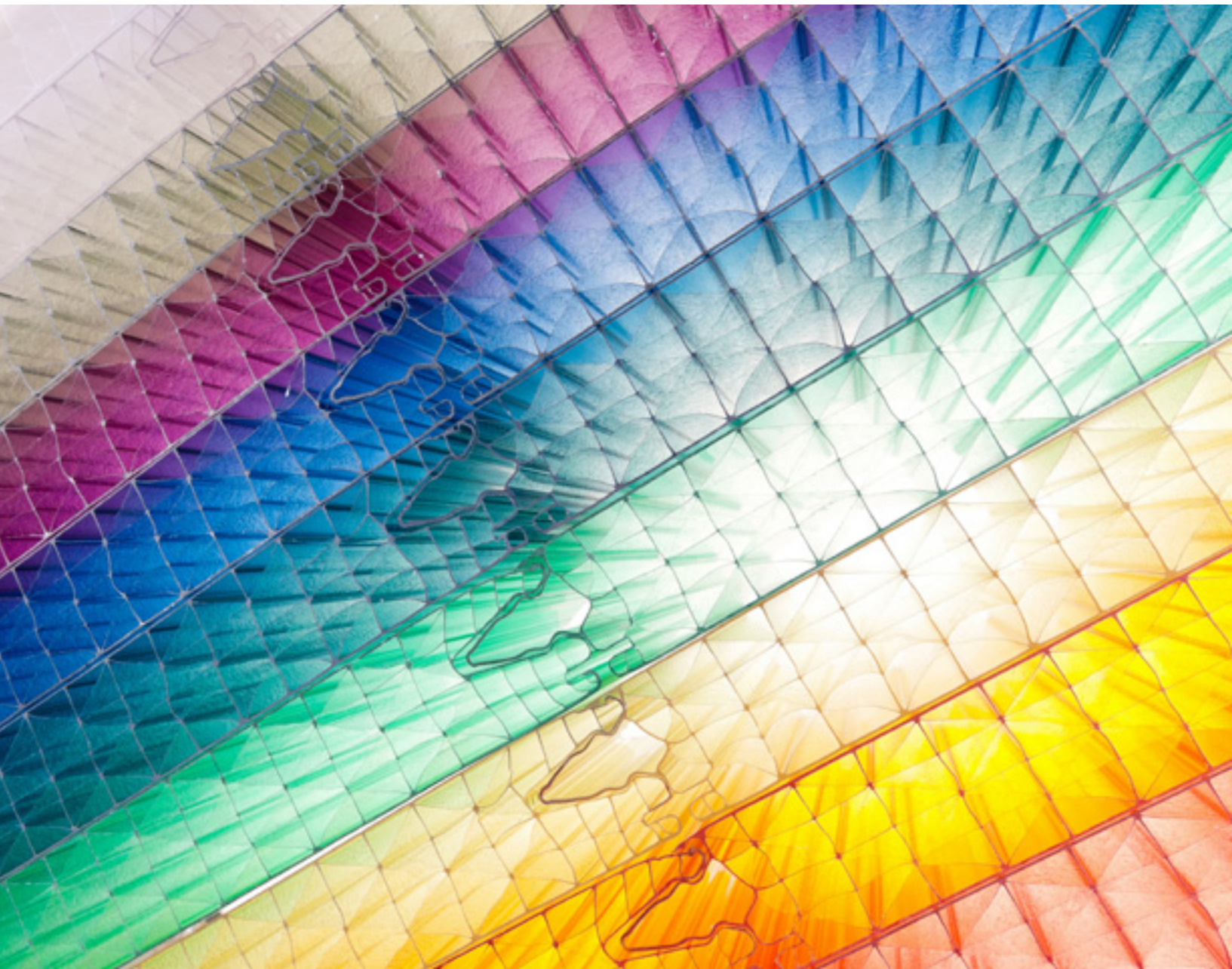
Structure Name	Structure	Gauge (mm)	Weights (kg/m <sup>2</sup> )	U-Value
<b>General Purpose</b>				
2-wall		4,5	1.0	3.86
		6	1.3	3.56
		8	1.5	3.26
		10	1.7	3.02
3-wall		16	2.7	2.27
<b>Ultra stiff</b>				
3-wall X-structure		16	2.8	2.1
		25	5.0	TBD
<b>High Insulation</b>				
5-wall		10	1.75	2.39
5-wall X-structure		32	3.8	1.32
		25	3.4	1.51
		16	2.7	1.88

Surface Treatment: LEXAN THERMOCLEAR sheets are standard supplied on both sides with a UV protective layer with a 10 year limited warranty. Upon request special surface treatments can be offered. "Easyclean" grade can offer improved cleaning, "Dripgard" grade may avoid formation of condensation droplets and "SUNXP™" for even longer lasting UV resistance. Note: not all surface treatments are available for each product

Colors: LEXAN THERMOCLEAR sheets are available in a wide range of colors including special Solar Control versions.

# MULTIWALL & CORRUGATED BUILDING SYSTEMS

The LEXAN™ multiwall sheet building systems and corrugated sheet portfolio provides creative glazing solutions for industrial roofing and facades. Characterized by the outstanding high impact resistance and excellent mechanical properties, each product in the portfolio is designed to provide added value performance through potentially low system costs and consistent high quality. Installation costs may be kept low as each product is designed using custom-made configurations for fast on site assembly.



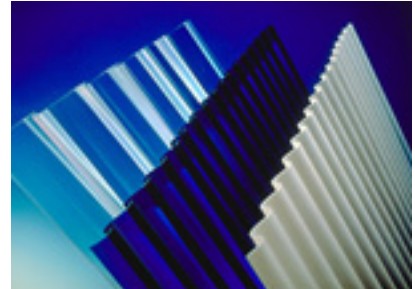


**POTENTIAL APPLICATIONS:**

- Facades
- Industrial roofing
- Roofing for offices and shopping centers

**KEY BENEFITS:**

- Smart connection systems reducing need for complex aluminum profiles
- Tailor-made low cost corrugated panels for easy connection with aluminum sandwich panels
- Seamless facade designs
- Excellent water tightness
- Light weight and cost efficient
- Creates high quality diffused light
- Easy and fast installation
- Excellent resistance to UV aging
- Custom colors possible

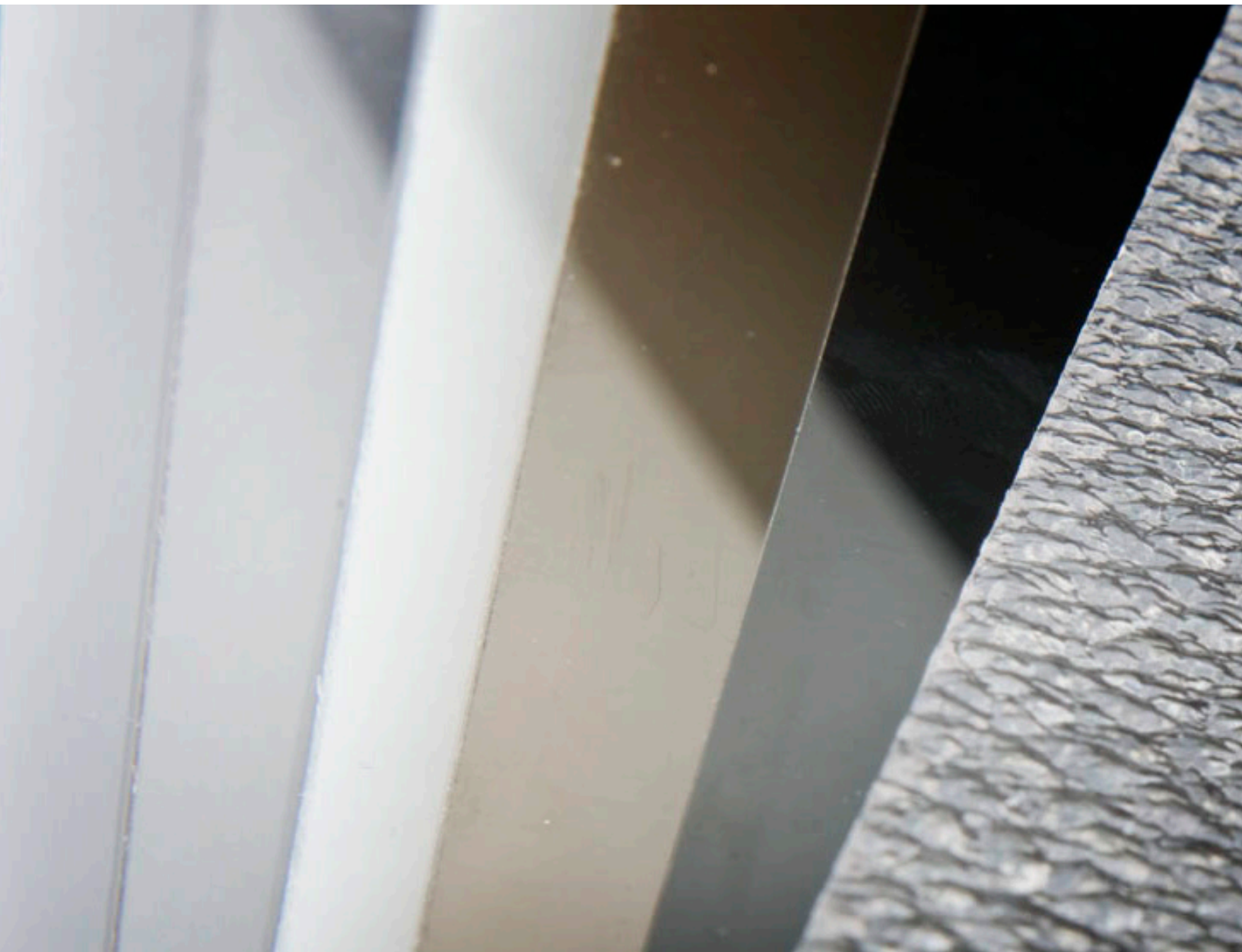


**PRODUCT OVERVIEW**

Structure Name	Structure	Description / Key Features	Width (mm)	Weights (kg/m <sup>2</sup> )
LEXAN™ corrugated sheet		<ul style="list-style-type: none"> <li>- Corrugated in custom shapes</li> <li>- Suitable for climate with low insulation needs</li> <li>- Low cost per m<sup>2</sup></li> </ul>	1260 1050	1.21-2.4
LEXAN THERMOCLICK™ sheet 40mm		<ul style="list-style-type: none"> <li>- Facade panel with integrated connection</li> <li>- 40mm thickness for high insulation</li> <li>- X-structure for high stiffness</li> <li>- High insulation U-value of 1.27</li> </ul>	500	4.0
LEXAN THERMOCLICK sheet 50mm		<ul style="list-style-type: none"> <li>- Facade panel with integrated connection</li> <li>- 50mm thickness for ultra-high insulation</li> <li>- High insulation U-value of 1.0</li> </ul>	1.000	5.15
LEXAN THERMOPANEL™ sheet		<ul style="list-style-type: none"> <li>- Panel for industrial roofing applications</li> <li>- Multiple wing designs for optimal connection to metal sandwich panels</li> </ul>	945 1.000	3.6
LEXAPANEL™ Standing Seam		<ul style="list-style-type: none"> <li>- Standing Seam panel for roofing and facades</li> <li>- Patented concept providing flexible widths while maximizing design freedom</li> </ul>	Flexible width	2-3.5

# SOLID SHEETS

Based on high-performance LEXAN™ polycarbonate resin, SABIC's portfolio of solid sheet products helps customers develop lightweight, durable parts with tailor-made performance across a wide variety of industries. This virtually unbreakable, transparent or opal white color LEXAN polycarbonate sheet comes with UV protection on one or both sides and provides remarkable clarity - even after many years of intense sunlight and weather extremes.



#### POTENTIAL APPLICATIONS:

- Machine guards
- Roof and facade glazing
- Signage & LED light covers
- Sound walls
- Carports
- Transportation
- Electrical and electronics

#### KEY BENEFITS:

- High impact resistance
- Excellent light transmission
- High heat resistance
- Wide color range availability
- UV- and weathering resistance
- Light weight
- Large sheet sizes
- Grades with increased flame retardance

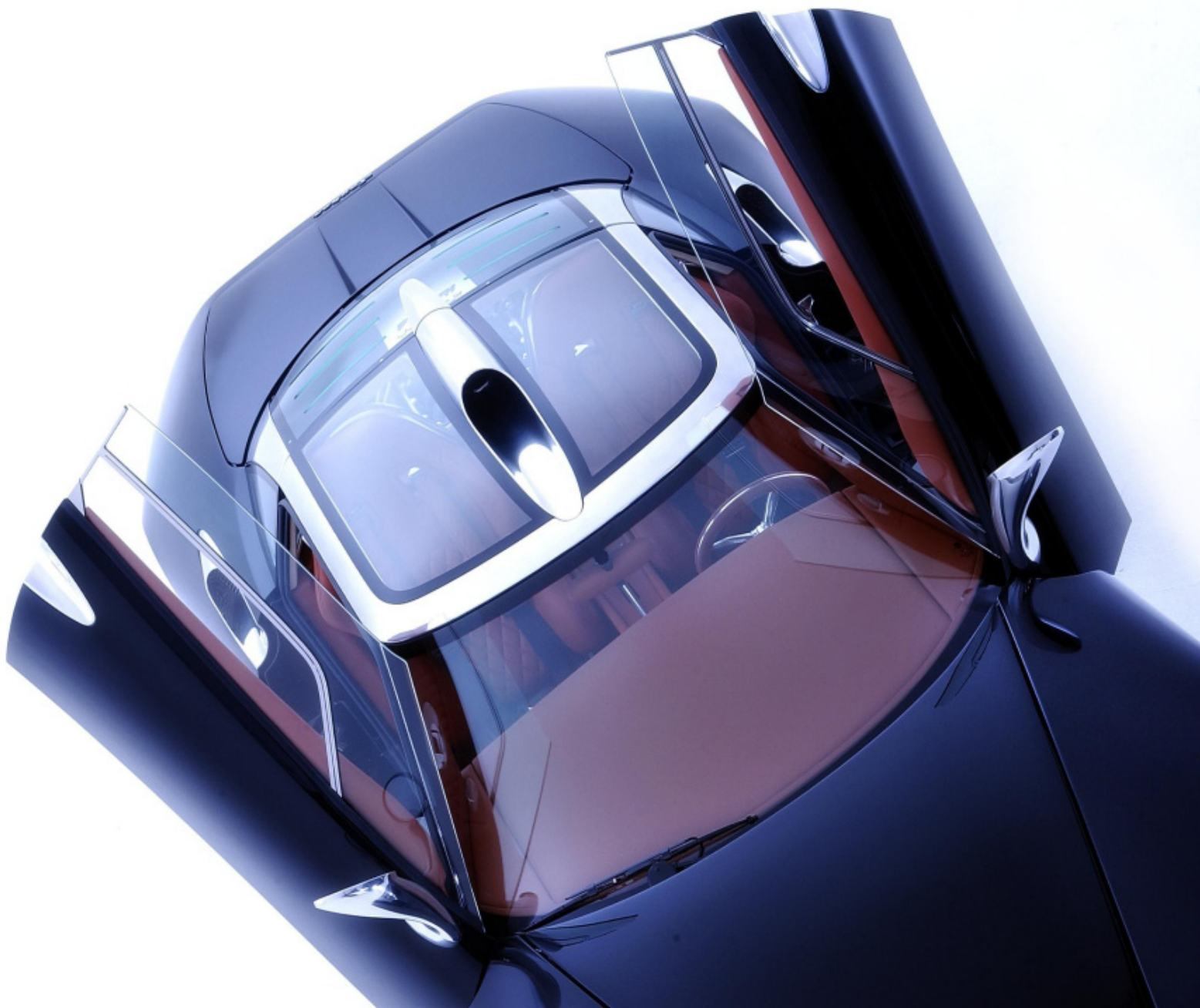


## PRODUCT OVERVIEW

Product	Description / Key Features	Gauges (mm)
<b>General Purpose</b>		
LEXAN™ 9030 / 9034 sheet	- General purpose polycarbonate sheet	2-15
LEXAN 9030TG sheet	- General purpose polycarbonate sheet in thin gauges	0.75-1.5
LEXAN EXELL™ D/ XL102UV sheet	- General purpose sheet for outdoor applications - UV resistant cap-layer on both sides	2-12
LEXAN EXELL DST sheet	- UV resistant cap-layer on both sides - Rough texture on one side for light diffusion - Also available in corrugated versions	2-6
LEXAN 9030AS sheet	- Polycarbonate sheet with increased abrasion resistance - UV resistant cap-layer on both sides	3-8
LEXAN SG305 sheet	- Diffusing opal white color and matte texture on one side - UV resistant cap-layer on both sides	2-8
<b>LED Lighting &amp; Sign</b>		
LEXAN EXELL D OB sheet	- Opal white translucent sheet - Excellent balance on light transmission and hiding power - UV resistant cap-layer on both sides	2-12
LEXAN SG305-OB sheet	- Polycarbonate sheet with optical LED hiding power - Diffusing opal white color and matte texture on one side - UV resistant cap-layer on both sides	2-8

# OPTICAL QUALITY & COATED SHEET

Virtually unbreakable, high optical quality LEXAN™ polycarbonate (PC) sheet materials from SABIC combine crystal clear transparency with value-added performance that is light weight, features outstanding low ripple and distortion, and has an extremely low number of optical defects. These optical quality and coated sheets are supplied with industrial leading optical specifications.



## OPTICAL QUALITY SHEET

Produced with a class 10,000 clean room technology, LEXAN™ OQ sheet can offer one of the best optical quality materials for the glazing of forestry vehicles, high speed trains, high security facilities and bullet resistant glass-PC laminates for VIP, military and police vehicles. While providing easy maintenance, these lightweight, shatter proof products also offer excellent vision, long-term appearance, abrasion- and chemical-resistance.



### POTENTIAL APPLICATIONS:

- Base sheet for 3D vehicle glazing
- Base sheet for coated sheet
- Layers in (ballistic) safety laminates
- Visors & goggles

### KEY BENEFITS:

- Low distortion level
- Minimal number of point defects
- Available in custom colors
- Suitable for lamination with glass by PU interlayers
- High impact & excellent transparency
- Light weight (-50% vs. glass)



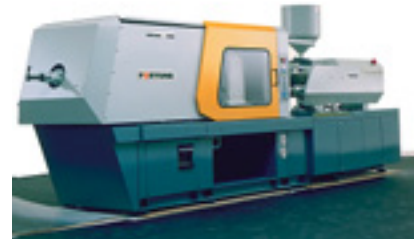
## PRODUCT OVERVIEW

Product	Description / Key Features	Gauges (mm)
LEXAN ULG1003 sheet	- Highest optical quality sheet produced in clean room - Lowest number of point defects - Very low distortion level	2-15
LEXAN 9034HO sheet	- Optical quality sheet with low distortion - Low number of point defects by camera control	2-12.7
LEXAN SL2030 sheet	- Optical quality thin-gauge sheet for visor applications - Available in versions with UV cut-off up to 380nm	0.75-3



## COATED SHEET

LEXAN™ MARGARD™ sheet offers optical clarity in combination with a unique abrasion and UV resistance, which can make it an excellent candidate for safety and security glazing to suit a wide range of applications. Available clear or bronze tinted, it can be used for both flat and curved glazing. Unique coatings offer high abrasion resistance, anti-fog behavior and increased resistance to UV weathering. Some product grades can be formed into (moderate) 3D shapes.



### POTENTIAL APPLICATIONS:

- Specialty vehicle glazing
- Police vehicle glazing
- Motorcycle windshields
- Layers in (ballistic) safety laminate
- Appliance facias
- Train glazing
- Protective glazing
- Sound-walls
- Visors & goggles
- Machine guards

### KEY BENEFITS:

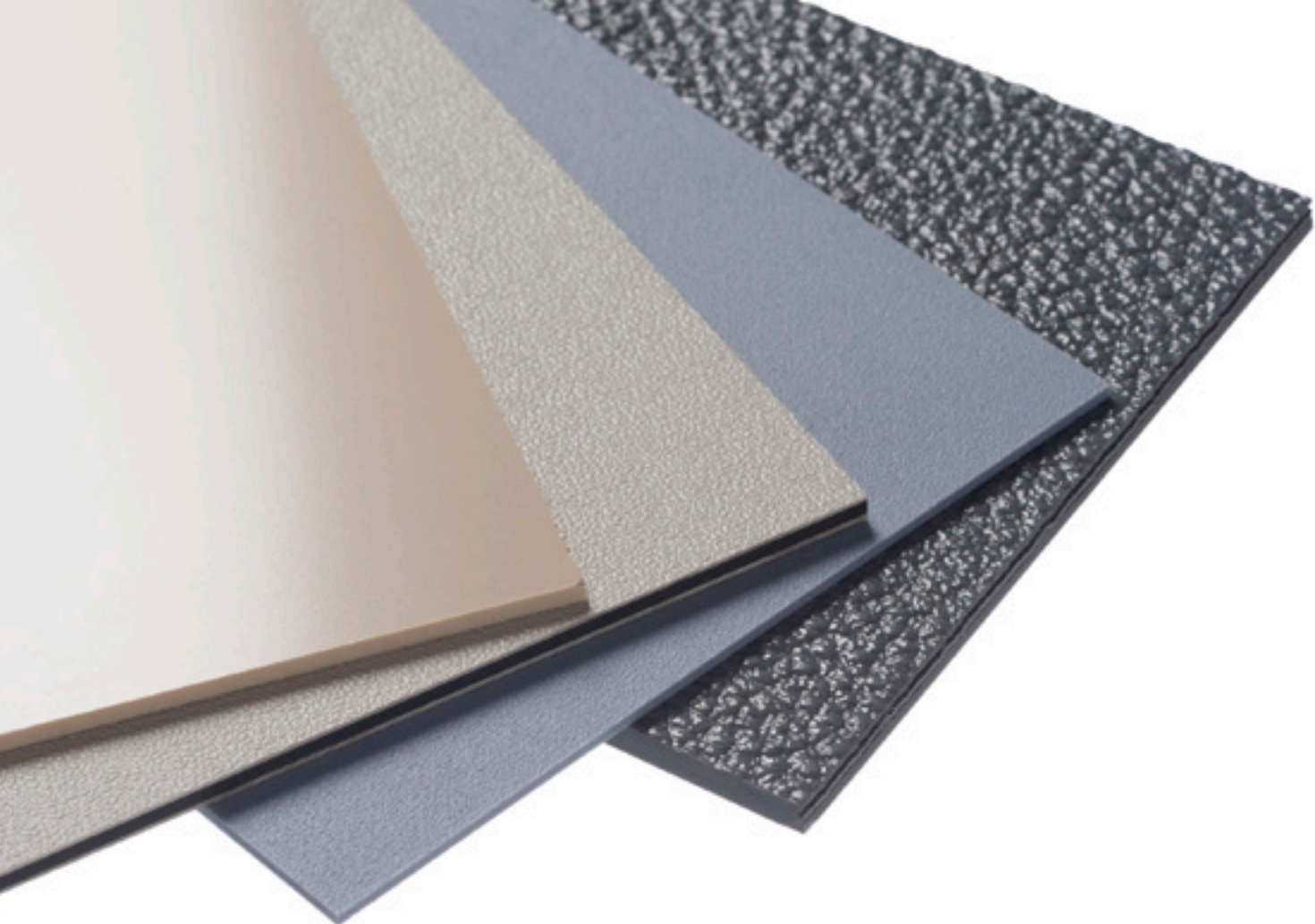
- Abrasion resistance
- Resistance to UV weathering
- Available in custom colors
- Enhanced chemical resistance
- Formability for select coatings
- Optional anti-fogging



## PRODUCT OVERVIEW

Product	Description / Key Features	Taber Haze# (abrasion)	Gauges (mm)
<b>Products for flat applications</b>			
LEXAN MARGARD MRX sheet	- 2 sides hard coated sheet - General purpose base sheet - 5 year UV weathering	~10% after 500 cycles	2-15
LEXAN MARGARD MR5E sheet	- 2 sides hard coated sheet - Highest optical quality / lowest distortion - 7 yrs UV weathering	~5% after 500 cycles	3-12
LEXAN MARGARD MR10 sheet	- 2 sides hard coated sheet - Optical quality / low distortion - 10 yrs UV weathering	~8% after 500 cycles	3-12.7
LEXAN MARGARD HLG5 sheet	- 1 side hard coated sheet - Highest optical quality / lowest distortion	~5% after 500 cycles	2.5-9.5
LEXAN MARGARD HLG3 sheet	- 1 side hard coated sheet - Highest abrasion resistance - Highest optical quality / lowest distortion	~3% after 500 cycles	1-6
<b>Products for curved and 3D applications</b>			
LEXAN MARGARD FMR5XT sheet	- 2 sides hard coated for 3D windshield, formable	~10% after 100 cycles	3-12
LEXAN MARGARD FLGXT sheet	- 1 side hard coated for 3D laminates, formable	~10% after 100 cycles	3-8
LEXAN MARGARD CTGXTAF sheet	- 2 sides coated thin-gauge sheet for visors, formable - 1 side features a special anti-fog coating	~10% after 100 cycles on hard-coated side	0.75-3
LEXAN MARGARD MRFAF2 sheet	- Thin-gauge sheet for visors with anti-fog coating on both sides	~15% after 100 cycles	0.75-3

# Taber test using 500 grams/load



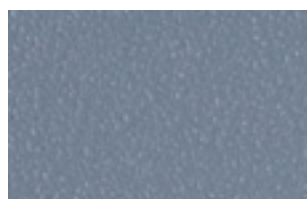
## ADVANCED FLAME RETARDANT SHEET

SABIC offers a range of products for aircraft- and railway-interior applications ranging from seating to wall cladding and lighting. SABIC's opaque and translucent material portfolio not only offers light weight and high impact resistant materials but also helps aircraft and railway interior manufacturers to meet tough flame, smoke, toxicity and heat release regulations, reduce overall system costs and enhance the aesthetics, safety and comfort of the cabin environment.

### SURFACE TEXTURES



**5 TEXTURE**  
Matte texture for low gloss surfaces



**6 TEXTURE**  
rougher texture for better texture retention after forming and matte surface



**11N TEXTURE**  
Haircell texture for maximum abrasion resistance



**18 TEXTURE**  
Very rough random texture



#### POTENTIAL APPLICATIONS:

- Seating
- Wall/ceiling cladding
- Galley applications
- Light diffusers
- Electrical cabinets
- Medical device housings

#### KEY BENEFITS:

- Compliance with key industry requirements
  - Flame resistance
  - Low smoke density
  - Low toxicity
  - Heat release
- Abrasion resistance by surface texture
- Impact resistance
- Dimensional stability
- Thermoformable

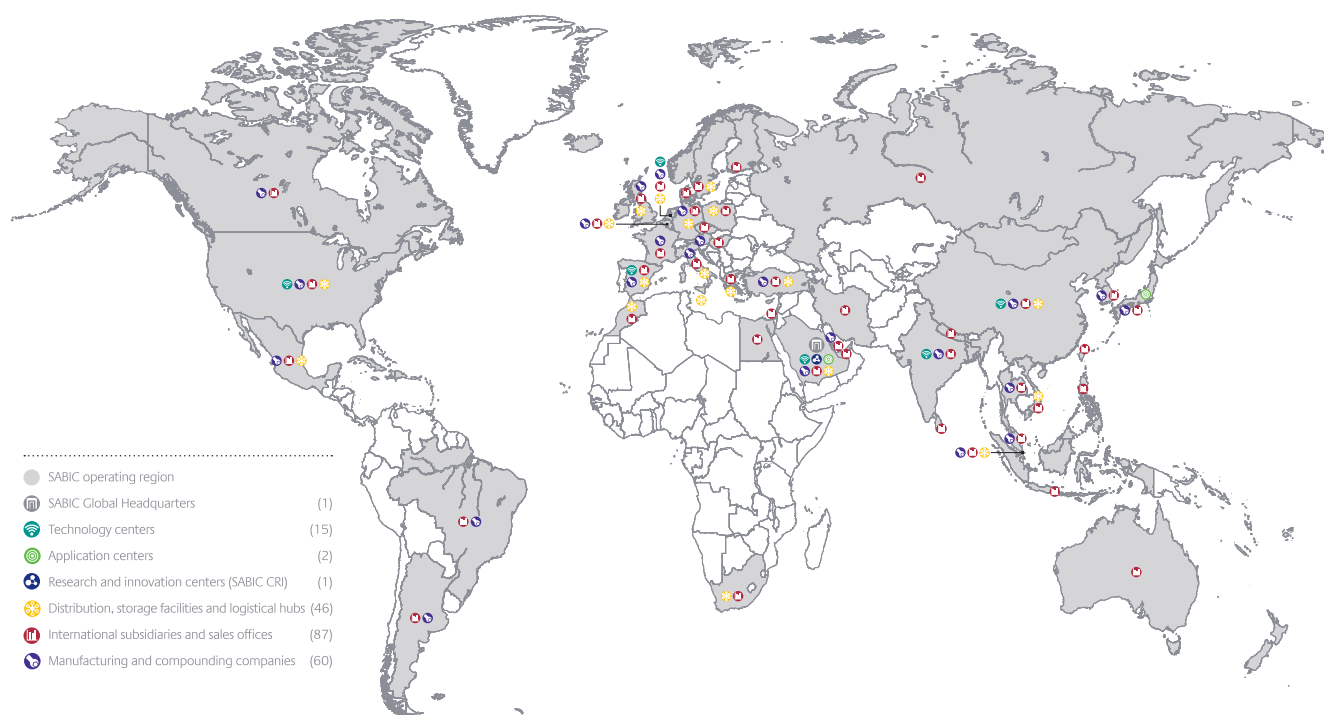


## PRODUCT OVERVIEW

Product	Description	Key Features/Certifications*	Texture Type (abrasion)	Gauges (mm)
LEXAN™ F2000 sheet	Clear/translucent FR sheet	Pass German DIN 5510 S4 SR2 ST2 norms at 3mm French NF F 16-101 M2, F2 rating at 2 - 8 mm Compliant with CEN/TS 45545 norm R4 for lighting	polished	1.5-9.5
LEXAN F2000A sheet	Clear/translucent FR sheet	Compliant with FAR25853 & ABD0031 requirements at 2mm and 3mm. Environmentally responsible flame retardancy according to DIN/VDE 0472 part 815	polished	2-6
LEXAN F2500 sheet	Clear FR sheet	Pass Flame/Smoke/Toxicity for FAR ABD aviation requirements. ECO responsible flame retardancy according to DIN-VDE norm meeting UL94 V0 at 2mm	polished	2-6
LEXAN F6000 sheet	Opaque FR Sheet	Compliant with FAR25853 and ABD-0031 regulations. Pass NF16.101 –M2, DIN5510 - S4 SR1 ST2 at 1,5mm	5/6/11N	3-6
LEXAN H6000 sheet	Opaque FR sheet	Pass Polish norms for side wall and ceiling applications (PN-K-02512, PN-L-02501, PN-K-02505), French NF F 16-101 M1, F2 rating at 2mm and German DIN 5510 Part 2 S4-SR2-ST2 norms at 3mm and UL94 V0 at 1.5mm. ECO responsible flame retardancy according to DIN-VDE 0472 part 815 norm	6/11N	3-6
LEXAN H6500 sheet	Opaque, low gloss FR Sheet	Pass CEN/TS 45545 R6 (seating), French NF 16-101 M1F1 norm at 2-4 mm.	6/11N	3-6
LEXAN H6200 sheet	Opaque FR Sheet	Compliant with German DIN 5510 norm: S3 SR2 ST2 at 3 mm and S4 SR2 ST2 at 4 mm	6/11N	3-6
LEXAN H6300 sheet	Opaque FR sheet	Pass India railway requirements for seating and cladding	11N	3.6
LEXAN ETFR sheet	Opaque FR sheet	Pass India railway requirements for seating	11N	3-6
LEXAN XHR6000 sheet	Opaque FR sheet	Compliant with FAR25853 and ABD-0031 regulations. Pass NF16.101 –M2, DIN5510 - S4 SR1 ST2 at 1,5mm	6/11N/29	1-3
ULTEM™ R16SG29 sheet	Opaque FR sheet	Compliant with EN45545 norm at the highest level HL3 for R1 & R5 applications at 3mm	29 texture	2-4

\*Please contact your representative for up to date certification overview

# GLOBAL COMPANY WITH LOCAL SERVICES & SUPPLY



## SABIC IS COMMITTED TO ITS CUSTOMERS AROUND THE WORLD WITH A PORTFOLIO OF SPECIALTY FILM & SHEET MATERIALS, APPLICATION SUPPORT AND WORLDWIDE SERVICES.

Specialty Film & Sheet business operates a worldwide network of sales, distribution, research, manufacturing and technical service facilities. With all twelve ISO certified manufacturing sites across the USA, Canada, the Netherlands, Italy, Austria, China, Malaysia, India and Brazil, the company serves customers around the world in a broad spectrum of industries and applications. As a business unit of SABIC, Specialty Film & Sheet benefits from global cross-business resources and expertise. From its network of technical centers in the United States, the Netherlands,

Saudi Arabia, China, Japan, Korea and India, the company provides a variety of services. These include hands-on engineering and technical support that extends from selecting the right material to characterization of mechanical, thermal, UV/heat aging data, advanced light measurements, optical modeling to part design and installation guidelines. The company also offers a local team, complete supply chain and distribution organization to ensure a reliable source of materials to its customers wherever their manufacturing site is located.

SABIC ranks among the world's top petrochemical companies, and is a global market leader in the production of polyethylene, polypropylene, advanced thermoplastics, glycols, methanol and fertilizers. SABIC operates in more than 40 countries across the world with 33,000 employees worldwide. It has significant research resources with 18 dedicated technology and innovation facilities in Saudi Arabia, the USA, the Netherlands, Spain, India and China.



## CONTACT US

### Riyadh, Saudi Arabia

SABIC Corporate Headquarters  
PO Box 5101  
Riyadh 11422  
Saudi Arabia  
T +966 (0) 1 225 8000  
F +966 (0) 1 225 9000  
E [info@sabic.com](mailto:info@sabic.com)

### Americas

SABIC  
Specialty Film & Sheet  
One Plastics Avenue  
Pittsfield, MA 01201  
USA  
Toll-free  
1 800 323 3783 ext.3  
T 1 413 448 7125  
F (888) 443 2033  
E [sfscustomerservice@sabic-ip.com](mailto:sfscustomerservice@sabic-ip.com)

### Europe

SABIC  
Plasticslaan 1  
4612 PX  
Bergen op Zoom  
The Netherlands  
T +31 (0)164 293678  
F +31 (0)164 293272  
E [sfs.info@sabic-ip.com](mailto:sfs.info@sabic-ip.com)

### Asia Pacific

SABIC  
Specialty Film & Sheet  
1266 Nanjing Road (W)  
16th Floor, Plaza 66  
200040 Shanghai  
China  
T +86 21 62881088 ext. 6733  
F +86 21 6288 0818  
E [sfs.info@sabic-ip.com](mailto:sfs.info@sabic-ip.com)

SABIC  
9th Floor, Building No. 9, Tower B  
DLF Cyber city Phase III  
Gurgaon - 122002  
India  
T +91 124 4745300  
F +91 22 40263544  
E [sfs.info@sabic-ip.com](mailto:sfs.info@sabic-ip.com)

THE MATERIALS, PRODUCTS AND SERVICES OF SABIC INNOVATIVE PLASTICS HOLDING BV, ITS SUBSIDIARIES AND AFFILIATES ("SELLER"), ARE SOLD SUBJECT TO SELLER'S STANDARD CONDITIONS OF SALE, WHICH CAN BE FOUND AT <http://www.sabic-ip.com> AND ARE AVAILABLE UPON REQUEST. ALTHOUGH ANY INFORMATION OR RECOMMENDATION CONTAINED HEREIN IS GIVEN IN GOOD FAITH, SELLER MAKES NO WARRANTY OR GUARANTEE, EXPRESS OR IMPLIED, (i) THAT THE RESULTS DESCRIBED HEREIN WILL BE OBTAINED UNDER END-USE CONDITIONS, OR (ii) AS TO THE EFFECTIVENESS OR SAFETY OF ANY DESIGN INCORPORATING SELLER'S PRODUCTS, SERVICES OR RECOMMENDATIONS. EXCEPT AS PROVIDED IN SELLER'S STANDARD CONDITIONS OF SALE, SELLER SHALL NOT BE RESPONSIBLE FOR ANY LOSS RESULTING FROM ANY USE OF ITS PRODUCTS OR SERVICES DESCRIBED HEREIN. Each user is responsible for making its own determination as to the suitability of Seller's products, services or recommendations for the user's particular use through appropriate end-use testing and analysis. Nothing in any document or oral statement shall be deemed to alter or waive any provision of Seller's Standard Conditions of Sale or this Disclaimer, unless it is specifically agreed to in a writing signed by Seller. No statement by Seller concerning a possible use of any product, service or design is intended, or should be construed, to grant any license under any patent or other intellectual property right of Seller or as a recommendation for the use of such product, service or design in a manner that infringes any patent or other intellectual property right.

SABIC and brands marked with ™ are trademarks of SABIC or affiliates.  
© 2013 Copyright by SABIC. All Rights Reserved.